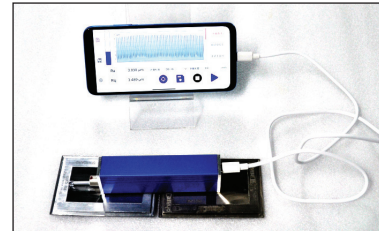
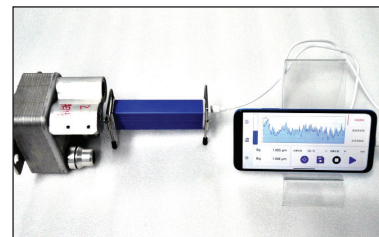
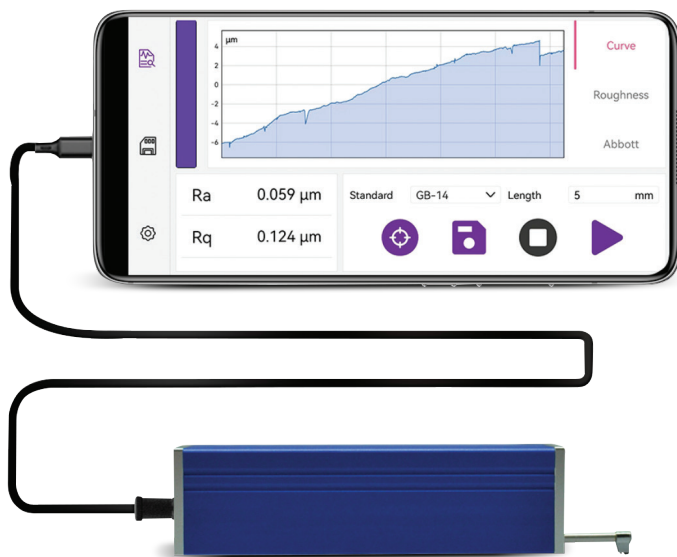


MSJ 210 Mobile Generation Surface Roughness Tester



PRODUCT INTRODUCTION:

MSJ:210 Surface Roughness Tester is an intelligent testing product that relies on highly integrated intelligent sensing technology and replaces the traditional host with a mobile App. This series subverts people's perception of the way traditional testing instruments are used. After connecting different smart sensors to the mobile phone, the function of the roughness testing instrument can be realized through the mobile phone App, which realizes the smooth connection between the mobile phone and the smart sensor, and can be used for data storage, data query, data sharing, multi-platform, interconnection and other functions, which greatly increases the convenience of testing.

TECHNICAL SPECIFICATIONS

Particulars		MCT 300 Mobile Generation Coating Thickness Gauge	
Sensor			
Detection principle	Inductive type	Drive parameters	Maximum drive stroke
Measuring range	200μm		Maximum drive stroke
Stylus radius	5μm		Return drive
Stylus material	Diamond	Indication error	Not more than ±10%
Measuring force	4mN (0.4gf)	Indication variability	Not more than 6%
Stylus angle	90°	Display content	Menu: Modify measurement conditions, calibrate indication value, choose to communicate with mobile phone or report output etc. Parameters: Compatible with four standard roughness parameters of ISO, DIN, ANSI and JIS. Graphics: non-filtered profile graphics. filtered profile graphics and tp curves. Prompt information: measurement information, menu prompt information.
Guide head longitudinal radius	45mm		
Parameters measurement	Ra75, Rq, Rp, Rv, Rc, Rt, S, R3z, PPI, Ra, Rsk, Rku, Ry, Sm, RΔa, RΔq, Rz, Pc, Rλq, Ir, RSm, Rz94, RPC, Rz.l, Rpm, HSC, Rk, Rpk, Rvk, Mr1, Mr2, V0, K, A1, A2, Rmr(i), Rmr2(i), Rdc(i)		

FEATURES

- High precision inductive sensor with improved main structure
- Five filtering methods: Gaussian, FFT, PC, DP, 2RC
- Compatible with ten standards including JIS-82, JIS-87, JIS-94, JIS-01, JIS-13, JSO-84, ISO-97, DIN-90, ASME-95, GB-14
- It is more convenient to use smart phones to evaluate and process the measurement results
- The setting is simple, and most of the parameters are selected automatically.
It can generate PDF rest reports and export data files in CSV format.

STANDARD DELIVERY

Name	Qty.
Actuator host	1 pc
Sensor / Data cable	1 pc
Adjustable stand	1 pc
Roughness standard test block	1 pc