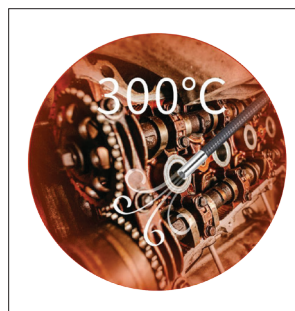


ET-1190 High Temperature Resistant Endoscope

ET-1190 High Temperature Endoscope is equipped with an air cooling system to effectively reduce the temperature of the camera, and comprehensive functions, which assists the inspectors to complete the inspection work efficiently.

TECHNICAL SPECIFICATIONS

Model		ET-1190
Host	Dimension	350*155*59mm
	Display	5 inch industrial LCD screen
	Output port	HDMI video output, Micro USB, TF card slot
	Storage	32G
	Power	Special rechargeable lithium battery pack, online charging, battery life ≥ 4 hours
	IP grade	IP54
	Working temperature	-10° ~ 50°
	Storage temperature	-20° ~ 60°
System	Relative humidity	Max 90%, No condensation
	Operation System	Multifunctional operating system
	Operation method	Button navigation, dual camera and video buttons
	Support Function	With freeze, zoom, photo, flip, video playback, analog ruler functions
	File Format	Image: JPEG (JPG), Video: AVI
Packing Case	Support Language	Chinese (Simplified and Traditional), French, English, German, Spanish, Italian, Japanese
	Weight	3.9kg
	L*W*H	47.9 X 38.7 X 15.5cm



300°C High Temperature Environment



Air cooling system design Reduce camera temperature

CAMERA AND PROBE

There are several length and diameter for ET-1190 to chose according to requirement.

Model						
Lens	Direction	Direct view				
	View angle (°)	120°				
	(DOF)	12~200mm				
	Pixels	1MP				
	Illumination system	Optical fiber guide, rear LED (life ≥ 3W hours)				
Probe	Lenght (L)	13±0.5mm				
	Diameter (D)	ø6mm - ø8mm (Optional)				
	Bending control	Mechanical 360° omnidirectional bending				
	Bending Angle(°)	Minimum bending value ≤ 220°				
Insert tube	Working temperature	-20°C~300°C				
	Length	1m	2m	3m	4m	5m
	Materials	Flexible (tungsten braided tube)				